

Office for Lease THE CLOVER BUILDING

14450 Northeast 29th Place, Bellevue, WA 98007



LISTING INFORMATION

SUITE 101:	2,014 SF
SUITE 104:	3,462 SF
SUITE 200:	13,982 SF
SUITE 205:	2,324 SF
SUITE 215:	4,107 SF (Available 11/1/23)
LEASE RATE:	\$38.00 SF/YR (Full Service)
TOTAL BLDG SF:	56,349 SF
YEAR RENOVATED:	2016

COMMENTS

Easy access to all major highways and 148th Ave NE

Building signage with high visibility from WA-520 available



CONTACT

Aaron Mathieu

amathieu@lee-associates.com

D 206.210.5207

We obtained the information above from sources we believe to be reliable. However, we have not verified its accuracy and make no guarantee, warranty or representation about it. It is submitted subject to the possibility of errors, omissions, change of price, rental or other conditions, prior sale, lease or financing, or withdrawal without notice. We include projections, opinions, assumptions or estimates for example only, and they may not represent current or future performance of the property. You and your tax and legal advisors should conduct your own investigation of the property and transaction.

Office for Lease THE CLOVER BUILDING

14450 Northeast 29th Place, Bellevue, WA 98007



PROPERTY HIGHLIGHTS

- Upon completion of the East Link Light Rail service (estimated 2023), a future connection to the station will offer tenants additional transportation options.
- Over \$1 M in capital improvements to the property
- Fitness facility with showers and locker rooms on basement level (open 24/7)
- Canteen/vending and lounge area on premises
- Basement storage available
- Abundant surface and garage parking available



CONTACT

Aaron Mathieu

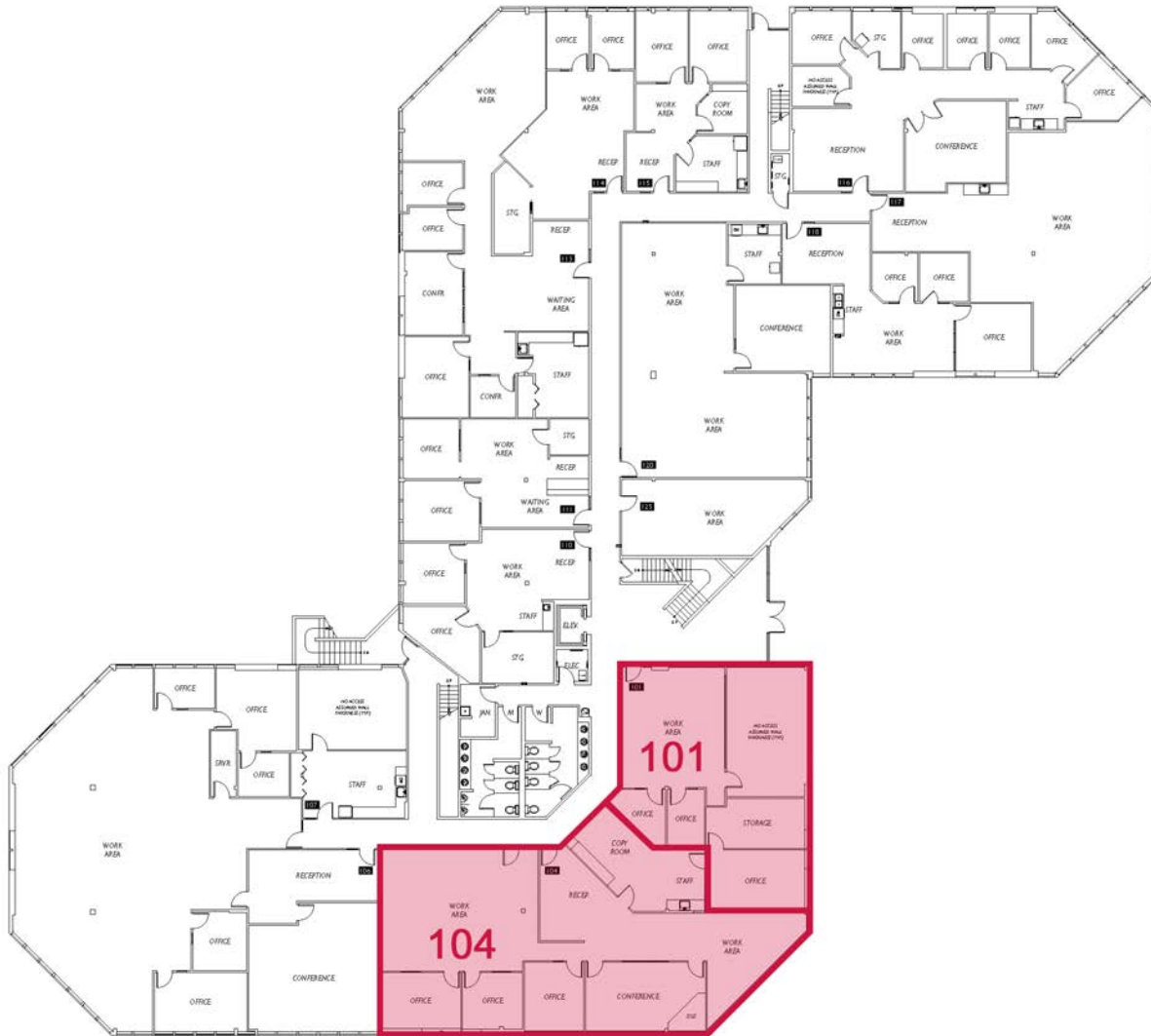
amathieu@lee-associates.com

D 206.210.5207

We obtained the information above from sources we believe to be reliable. However, we have not verified its accuracy and make no guarantee, warranty or representation about it. It is submitted subject to the possibility of errors, omissions, change of price, rental or other conditions, prior sale, lease or financing, or withdrawal without notice. We include projections, opinions, assumptions or estimates for example only, and they may not represent current or future performance of the property. You and your tax and legal advisors should conduct your own investigation of the property and transaction.

Office for Lease THE CLOVER BUILDING

14450 Northeast 29th Place, Bellevue, WA 98007



AVAILABLE SPACES

SUITE	SIZE (SF)	LEASE TYPE	LEASE RATE	DESCRIPTION
Suite 101	2,014 SF	Full Service	\$38.00 SF/yr	Can be combined with Suite 104 for a total of 5,476 SF
Suite 104	3,462 SF	Full Service	\$38.00 SF/yr	Can be combined with Suite 101 for a total of 5,476 SF

CONTACT

Aaron Mathieu

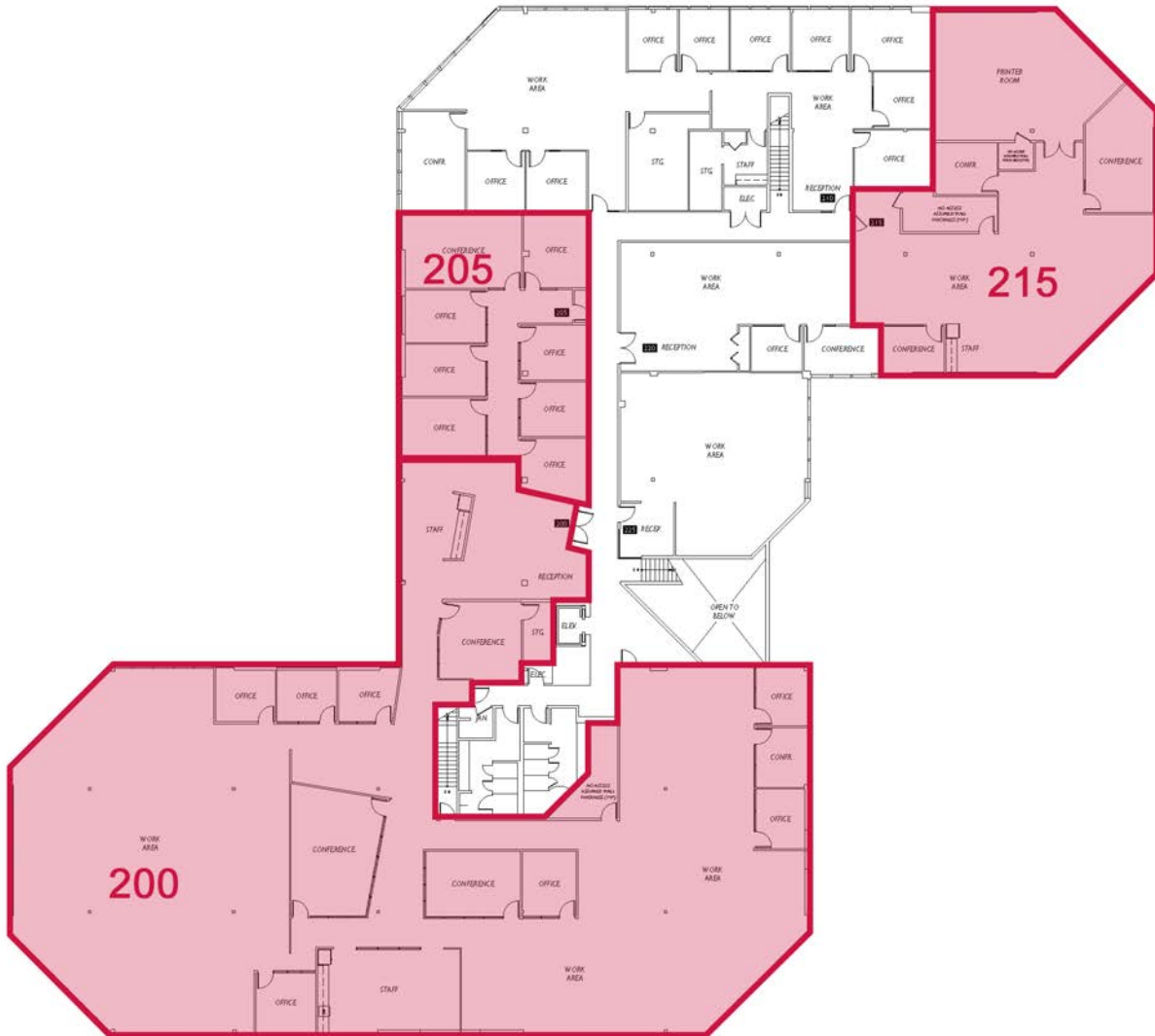
amathieu@lee-associates.com

D 206.210.5207

We obtained the information above from sources we believe to be reliable. However, we have not verified its accuracy and make no guarantee, warranty or representation about it. It is submitted subject to the possibility of errors, omissions, change of price, rental or other conditions, prior sale, lease or financing, or withdrawal without notice. We include projections, opinions, assumptions or estimates for example only, and they may not represent current or future performance of the property. You and your tax and legal advisors should conduct your own investigation of the property and transaction.

Office for Lease THE CLOVER BUILDING

14450 Northeast 29th Place, Bellevue, WA 98007



AVAILABLE SPACES

SUITE	SIZE (SF)	LEASE TYPE	LEASE RATE	DESCRIPTION
Suite 200	13,983 SF	Full Service	\$38.00 SF/yr	Can be combined with Suite 205 for a total of 16,307 SF
Suite 205	2,324 SF	Full Service	\$38.00 SF/yr	Can be combined with Suite 200 for a total of 16,307 SF
Suite 215	4,107 SF	Full Service	\$38.00 SF/yr	Available November 1, 2023

CONTACT

Aaron Mathieu

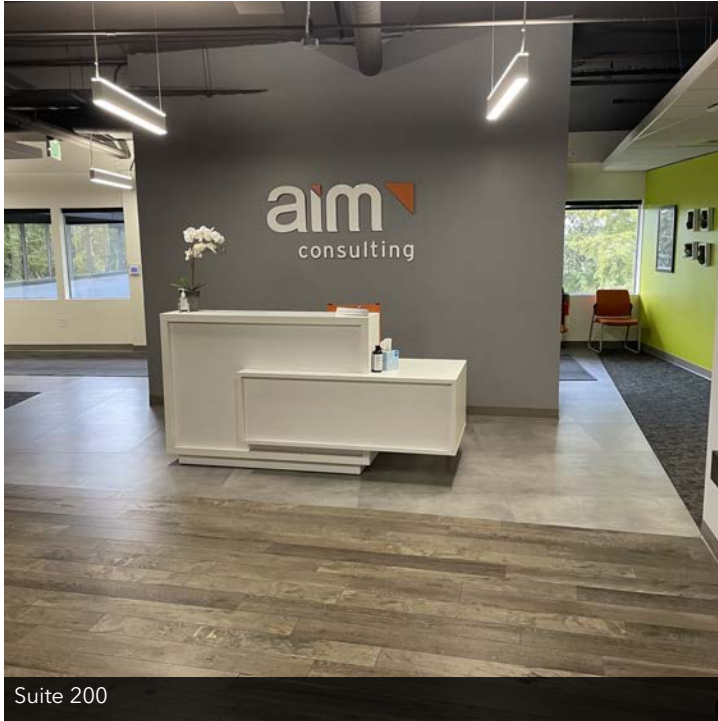
amathieu@lee-associates.com

D 206.210.5207

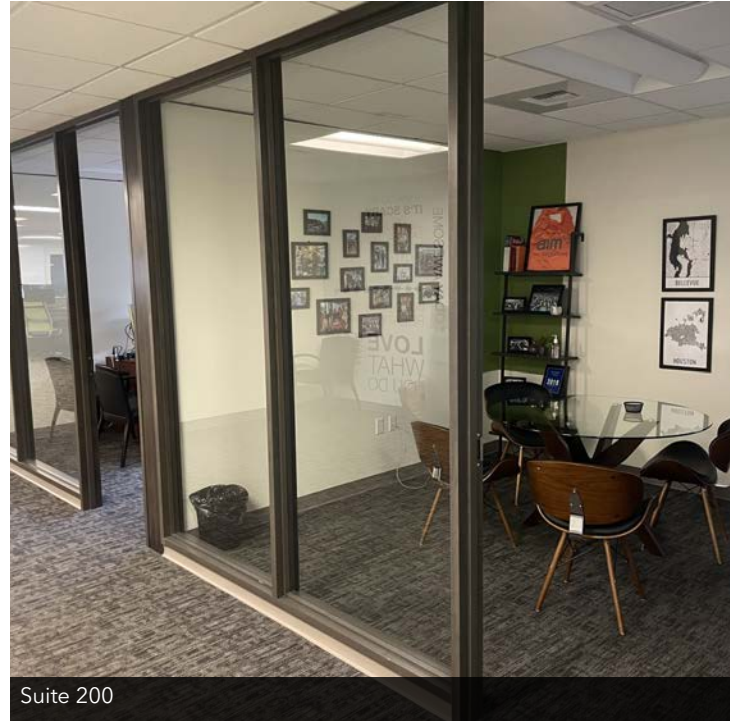
We obtained the information above from sources we believe to be reliable. However, we have not verified its accuracy and make no guarantee, warranty or representation about it. It is submitted subject to the possibility of errors, omissions, change of price, rental or other conditions, prior sale, lease or financing, or withdrawal without notice. We include projections, opinions, assumptions or estimates for example only, and they may not represent current or future performance of the property. You and your tax and legal advisors should conduct your own investigation of the property and transaction.

Office for Lease THE CLOVER BUILDING

14450 Northeast 29th Place, Bellevue, WA 98007



Suite 200



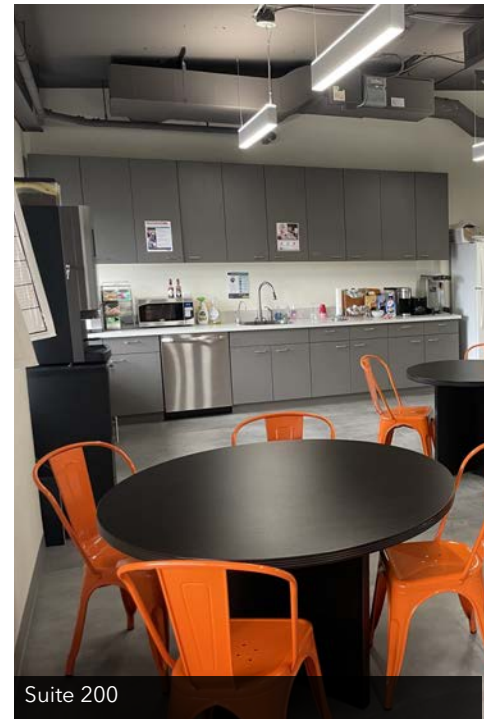
Suite 200



Suite 200



Suite 200



Suite 200

CONTACT

Aaron Mathieu

amathieu@lee-associates.com

D 206.210.5207

We obtained the information above from sources we believe to be reliable. However, we have not verified its accuracy and make no guarantee, warranty or representation about it. It is submitted subject to the possibility of errors, omissions, change of price, rental or other conditions, prior sale, lease or financing, or withdrawal without notice. We include projections, opinions, assumptions or estimates for example only, and they may not represent current or future performance of the property. You and your tax and legal advisors should conduct your own investigation of the property and transaction.